

Southern Palmetto

Environmental
Forestry - Wetlands - Wildlife

June 29, 2023

Seth Creech
3706 E. HWY 76
Mullins, SC 29574

**Subject: Wetland Assessment for
Pittman Road Waddell Tract (25 +/- ac)
Robeson County Parcel ID#: 291603004
Robeson County, North Carolina**

Mr. Creech:

We completed a routine wetland assessment (PWA) for the above referenced project on June 28, 2023. This tract is made up of a combination of mature woodlands and active agriculture field situated along the east side of Pittman Road in Robeson County, North Carolina.

Wetland Assessment

Based on the results of the study, the project area was determined to contain aquatic resources having indicators of wetland character that may have the potential to be subject to the jurisdiction of the U.S. Army Corps of Engineers. SPE performed a detailed wetland assessment on the project site. Our approach to perform the assessments included the following:

1. Use available remote sensing resources which will include but not be limited to the following: historic, panchromatic photography, false color infrared photography, USGS topographic maps, NRCS soil surveys and USFWS national wetland inventory maps. SPE synthesized and analyzed data to determine where areas are within the site that exhibit the greatest potential for jurisdictional freshwater wetlands.
2. Assessed site conditions with thorough field visits for the presence and/or absence of wetland areas, utilizing the three-parameter approach (hydric soils, hydrophytic vegetation and wetland hydrology) set forth in the 1987 United States Army Corps of Engineers (USACE) Wetland Delineation Manual.
3. An wetland assessment map has been included that illustrates the location and distribution of potential wetlands on the site.

All wetland boundaries identified on these figures are considered approximate and have not been flagged and delineated but are considered reliable approximations and can be used for planning purposes.

This tract contains three wetlands that are found on the both the eastern boundary and along the western side of the property. With the exception of Wetland #1, the other two wetlands are contiguous to Long Branch Swamp that flows into Big Swamp and then into the Lumber River. Wetlands #2 and #3 will be considered jurisdictional features and are regulated by both the US

Army Corps of Engineers and the N.C. DENR-Division of Water Quality. Wetland #1 is located wholly within the agriculture field footprint on this site and lacks a hydraulic connection to the downstream wetlands. Historically, this wetland was connected to Wetland #2, but has been severed with fill dirt placed when the canal was excavated. While this wetland lacks hydrophytic vegetation from recent agriculture activities, the US Army Corps of Engineers will classify this as a disturbed area and will be able to claim it due to hydric soils and hydrology indicators. A portion of Wetland #2 is also located within the active agriculture field. Contact us for a detailed discussion about these two areas located in the agriculture fields.

The wetlands identified on the attached map contain positive hydric soil indicators, primary/secondary hydrology indicators, and positive indicators of hydrophytic vegetation per the U.S. Army Corps of Engineers 1987 Wetland Delineation Manual. Both primary and secondary indicators of wetland hydrology are present with saturated soils within the top 12 inches of the soil surface, water-stained vegetation, standing water in some areas, and water marks. The remaining areas onsite are considered non-wetland areas otherwise known as uplands due to the lack of required wetland indicators and well drained to moderately well drained conditions.

As a note, wetlands and streams regulated by the U.S. Army Corps of Engineers are subject to the Clean Water Act of 1972. On a federal level, wetlands are regulated and enforced by the Environmental Protection Agency and the U.S. Army Corps of Engineers. And on a state level within a coastal county, wetlands and tideland communities are regulated by the NC DENR-DWQ. Potential wetland/non-wetland areas depicted here have not been verified by the U.S. Army Corps of Engineers. Areas depicted as wetlands were derived from interpretation of a combination of available remote sensing information and onsite investigation. All wetland boundaries identified on these figures are considered approximate and have not been flagged and delineated but can be used for planning purposes. Prior to any land disturbing activities, a final jurisdictional determination or delineation concurrence letter is recommended to be obtained from the U.S. Army Corps of Engineers.

Closing

Should you have any questions, require additional information, please contact me at your convenience at my email address southernpalmetto@yahoo.com or feel free to call me at (843) 685-2408 any time.

Sincerely,

Jeff Burleson

Jeff Burleson, R.F., C.W.B

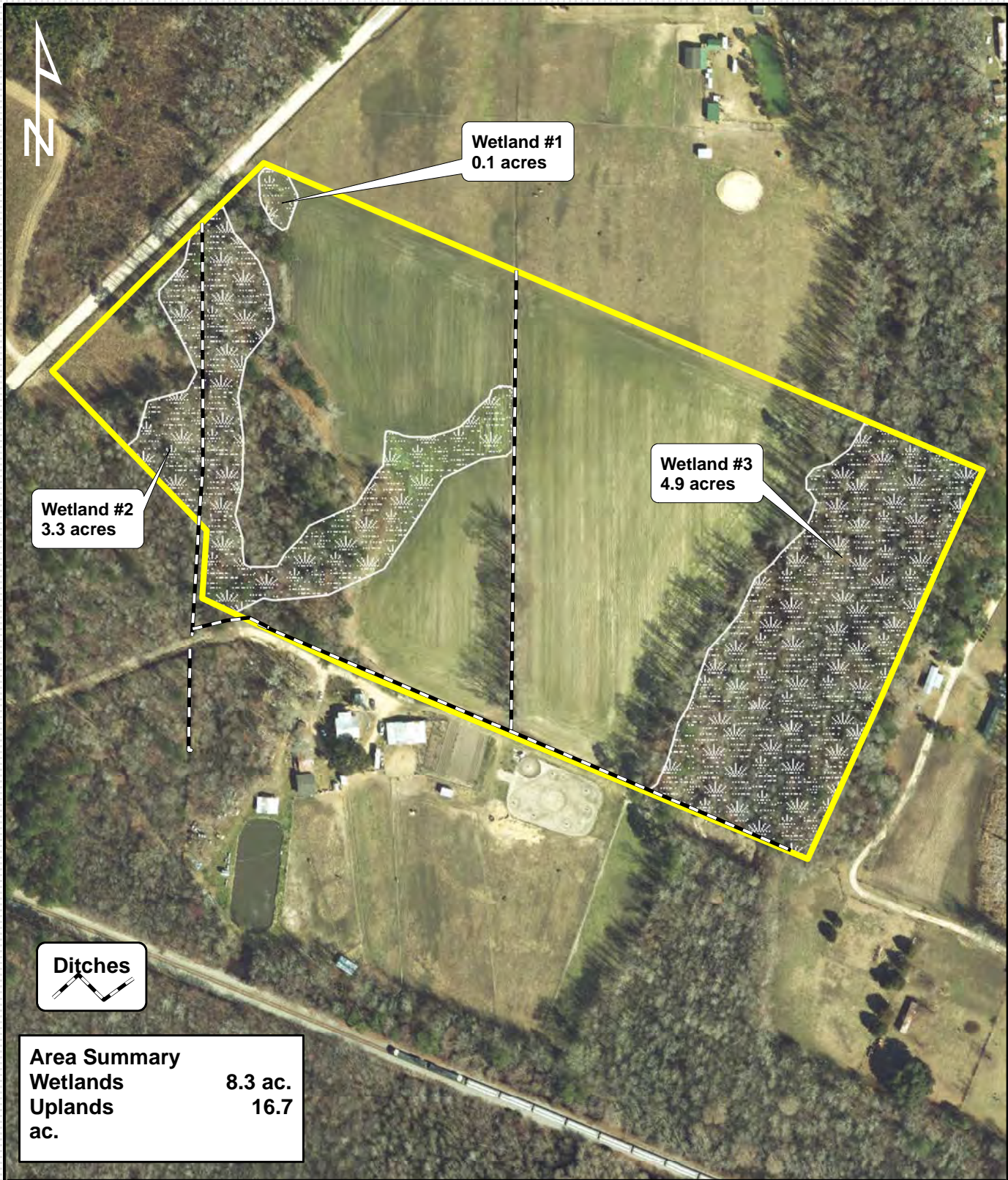
N.C. Registered Forester #1433
S.C. Registered Forester #1692
Certified Wildlife Biologist

File#: 175-23034

Southern Palmetto Environmental Consulting, LLC is a comprehensive environmental consulting firm serving the Southeastern United States based out of Myrtle Beach, South Carolina. Southern Palmetto specializes in a wide range of environmental issues from forestry and wildlife management to wetlands consulting and endangered species consultation. Principal, Jeff Burleson, has nearly two decades under his belt within the forestry, wetlands, and wildlife consulting field providing environmental solutions to landowners in the Carolinas and Georgia. He is a registered forester in both North and South Carolina and is certified by The Wildlife Society as a Certified Wildlife Biologist. Southern Palmetto offers a wide range of services to assist landowners with their environmental needs, including, but not limited to:

- Wetland Assessment & Delineation
- Wetland Permitting & Mitigation Services
- Coastal Zone Dock Permitting (includes, boatlifts, boat docks, boat ramps, sea walls, etc.)
- Forest Management Plans
- Timber Sales & Marketing (Includes Select Harvests, Thinnings, and Clearcuts)
- Chipping, Prescribed Burning, Reforestation, Site Preparation Activities
- Endangered Species Survey & Section 7 Consultation
- Wildlife Management Plans & Implementation
- Food Plot Design & Implementation
- Land Sales and Highest and Best Use Evaluations

If you require any of the services listed above, please feel free to contact **Southern Palmetto Environmental Consulting, LLC** with any of your wetlands, forestry, and wildlife related needs.



Area Summary	
Wetlands	8.3 ac.
Uplands	16.7 ac.

Disclaimer: Potential wetland/non-wetland areas depicted here have not been verified by the U.S. Army Corps of Engineers. Areas depicted as potential wetlands were derived from interpretation of available remote sensing information and an onsite investigation. Prior to any land disturbing activities, a final letter of jurisdictional determination should be obtained from the U.S. Army Corps of Engineers.

Southern Palmetto Environmental
Forestry - Wetlands - Wildlife

Wetland Assessment
Pittman Rd Waddell Tract (25+/- ac)
Parcel ID# 291603004
Robeson County, North Carolina
June 29, 2023

